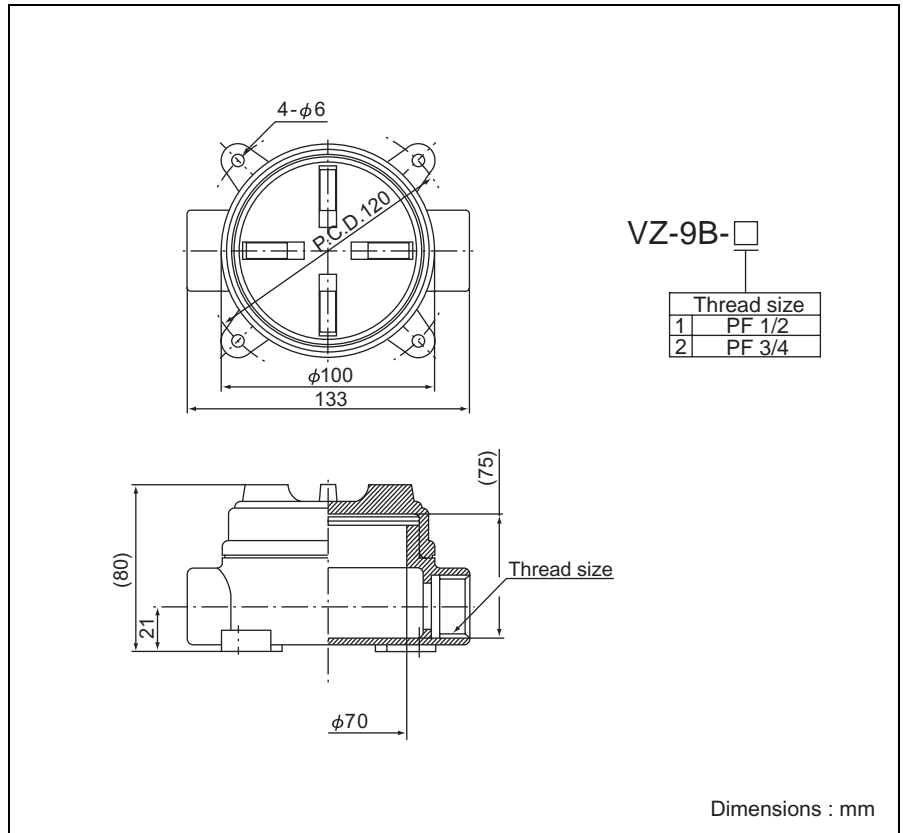


Accessories

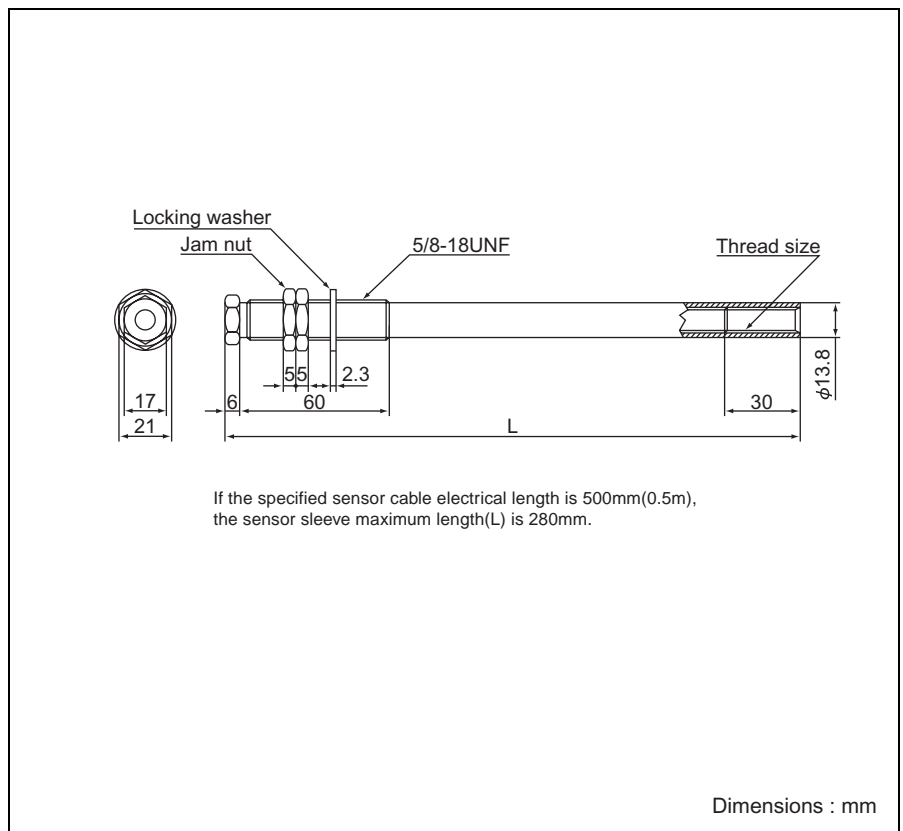
VZ-9B Junction Box

The VZ-9B Junction Box used to protect the cable and coax. connector which are withdrawn from the machine case when the VZ-9A Junction Box can not be directly installed with the machine case.



VZ-10A Sensor Sleeve

The VZ-10A Sensor Sleeve is used to install the VK-A Series VL Sensor in the machine case using the VZ-10A Sensor Sleeve and the VZ-7A adapter. Specify the size of the machine case to the rotor surface. The drawing shows how to determine the VZ-10A Sensor Sleeve length when using the VZ-5A Sensor.



Model Code No.

VZ-10A-□□□

| Thread size | | Sleeve length (L) | |
|-------------|-----------|-------------------|-------|
| 1 | M10×1 | 10 | 100mm |
| 11 | | 36 | 360mm |
| 1 | 3/8-24UNF | 11 | 110mm |
| 11 | | 37 | 370mm |
| 12 | | 38 | 380mm |
| 13 | | 39 | 390mm |
| 14 | | 40 | 400mm |
| 15 | | 41 | 410mm |
| 16 | | 42 | 420mm |
| 17 | | 43 | 430mm |
| 18 | | 44 | 440mm |
| 19 | | 45 | 450mm |
| 20 | | 46 | 460mm |
| 21 | | 47 | 470mm |
| 22 | | 48 | 480mm |
| 23 | | 49 | 490mm |
| 24 | | 50 | 500mm |
| 25 | | 51 | 510mm |
| 26 | | 52 | 520mm |
| 27 | | 53 | 530mm |
| 28 | | 54 | 540mm |
| 29 | | 55 | 550mm |
| 30 | | 56 | 560mm |
| 31 | | 57 | 570mm |
| 32 | | 58 | 580mm |
| 33 | | 59 | 590mm |
| 34 | | 60 | 600mm |
| 35 | | | 350mm |