

# CM-P Precision Accelerometer

Precision Accelerometer, Industrial, Ceramic Shear IEPE Top Exit

**Features**

Our line of precision accelerometers with AC voltage output is designed for use with all types of data collectors, online analysis systems and TSI.

**Protecting**

Fans, Motors, Pumps, Compressors, Centrifuges, Conveyors, Air Handlers, Gearboxes, Rolls, Dryers, Presses, Cooling, HVAC, Spindles, Machine Tooling, Process Equipment and many more.



Technical Performance		Mechanical Performance	
<b>Mounted Base Resonance:</b>	1800 Kcpm (30 KHz)	<b>Case Material:</b>	304 Stainless Steel
<b>Measurement Range</b>	See: "How To Order" Table ±5%	<b>Sensing Element/Construction:</b>	Ceramic Shear
<b>Frequency Range (±3 dB) :</b>	See: "How To Order" Table	<b>Mounting Torque:</b>	2 to 5 ft-lb (2.7 to 6.8 Nm)
<b>Transverse Sensitivity:</b>	≤5%	<b>Weight:</b>	3.3 oz (94 gm)
<b>Non-Linearity:</b>	± 1%	<b>Mounting Threads:</b>	See: "How To Order" Table
<b>Broadband Resolution (1 to 10000 Hz) :</b>	50 µg (491 µm/sec <sup>2</sup> )		
Electrical		Environmental	
<b>Excitation Voltage:</b>	18 to 28 VDC	<b>Overload Limit (Shock)</b>	5000 g pk (49050 m/s <sup>2</sup> pk)
<b>Constant Current Excitation</b>	2 to 20 mA	<b>Temperature Range</b>	-65 to +250 °F (-54 to +121 °C)
<b>Settling Time (within 1% of bias)</b>	≤2.0 sec	<b>Temperature Response</b>	See Graph %/°F
<b>Electrical Isolation (Case):</b>	>10 <sup>8</sup> Ohm	<b>Enclosure Rating</b>	IP68
<b>Electrical Isolation:</b>	Case		
<b>Spectral Noise (10 Hz) :</b>	2.5 µg/√Hz (24.5 (µm/sec <sup>2</sup> )/√Hz)		

Wiring	Acceleration Output	Ground	Temperature Output	Ground
2 Pin Mil-C-5015	Pin A	Pin B	Pin C	N/A
3 Pin Mil-C-5015	Pin A	Pin B	Pin C	N/A
Integral Cable (AA)	Red	Blue	N/A	N/A
Integral Cable (AT)	Red	Black	White	Green

Vibration sensor should be firmly fixed to a flat surface (spot face surface may be needed to be produced and cable anchored to sensor body.)



## How To Order

Product Prefix		Product Series		Code	Model	Code	Stud Mounting Threads	Code	Cable Length (10 ft Increments)
CM	Case Mounted	P	Precision	30	Top Exit	A	1/4-28UNF Male	010	10 ft. (3,05 mts.)
						B	M6 x 1 mm Male	020	20 ft. (6,10 mts.)
								030	30 ft. (9,14 mts.)
								XXX	Length Specified in ft. ≥40 ft. (12.2 mts)

Code	Output	Code	Sensitivity	Frequency Range (±3dB)	Range	Code	Cable/Connectors	Code	Options
AA [1]	Acceleration	010	10 mV/g	12 to 900 Kcpm	±500 g	52	2 Pin MIL-C-5015	(Blank)	No Options
AT [2]	Acceleration & Temp.	050	50 mV/g 5.1 mV/(m/s <sup>2</sup> )	12 to 900 Kcpm (0.2 Hz to 15KHz)	±100 g (±981 m/s <sup>2</sup> )	53	3 Pin MIL-C-5015	/EX	Intrinsically Safe
<b>AT Option Version</b> Temp. Output Range: +36 to +250 °F (+2 to +121 °C) Temp. Scale Factor: 5.56 mV/°F + 32 (±10 mV/°C)		100	100 mV/g 10.2 mV/(m/s <sup>2</sup> )	12 to 900 Kcpm (0.2 Hz to 15KHz)	±50 (±490 m/s <sup>2</sup> )	01	Polyurethane-Jacketed Cable	/HT	High Temperature (325° F/ 163°C)
						02	Polyurethane-Jacketed w/ Armor Cable	/EH	Intrinsically Safe & High Temp

**Note:**  
[1] Connector 52: 2 Pin MIL-C-5015.  
[2] Connector 53: 3 Pin MIL-C-5015.



SEC of America  
807 E Main St. Durham, NC 27701.  
Ph: (919) 533-4920  
sales@sec-america.com  
www.sec-america.com



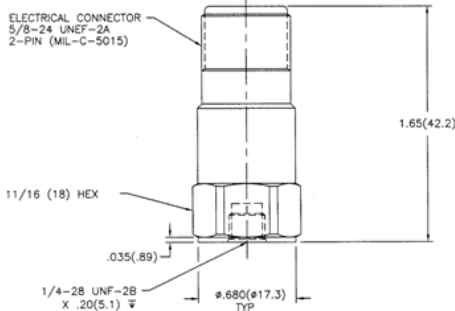
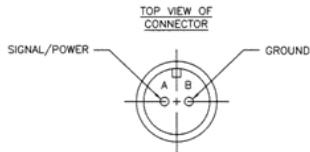
# CM-P Precision Accelerometer

Precision Accelerometer, Industrial, Ceramic Shear IEPE Top Exit With Connector

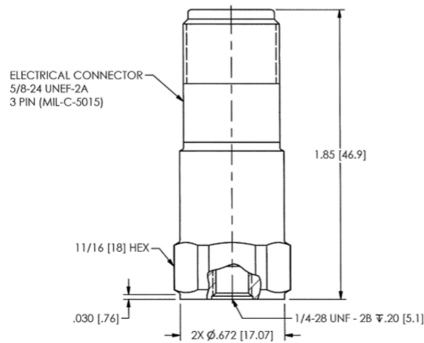
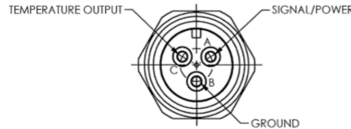
## OUTLINE DRAWING MODEL CM-P30 ACCELEROMETER



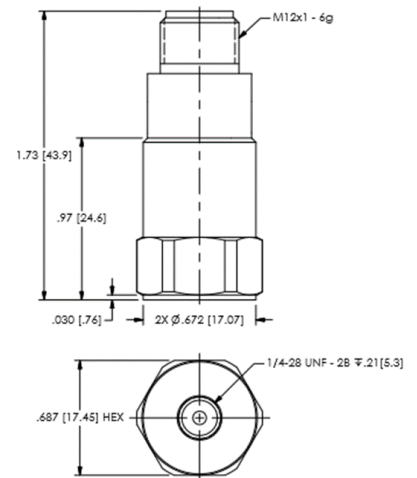
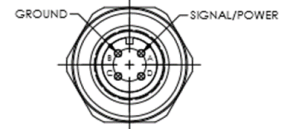
**TOP VIEW OF CONNECTOR  
2-PIN (MIL-C-5015)**



**TOP VIEW OF CONNECTOR  
3-PIN (MIL-C-5015)**



**TOP VIEW OF CONNECTOR  
4 PIN—M12**



Option: EX , Hazardous Area Approval

CI I, Div 2, Groups A, B, C, D; ExnL IIC T4, AExnA IIC T4

EEx ia IIC T4, -40°C ≤ Ta ≤ 121°C, II 1 G

CI I, Div I, Groups A, B, C, D; CI II, Div I, Groups E, F, G; CI III, Div I

Ex ia IIC T4, AExia IIC, T4

EEx nL IIC T4, -40°C ≤ Ta ≤ 121°C, II 3 G

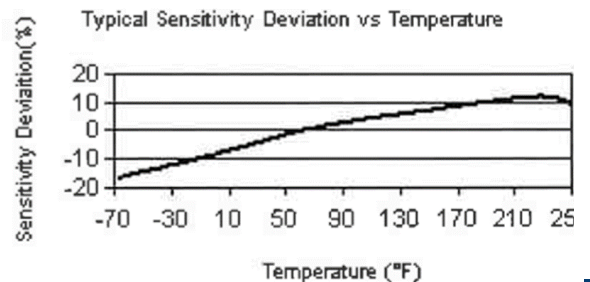
Contact factory for specific approvals.

**Product Notes:**

- [1] Conversion Factor 1g = 9.81 m/s<sup>2</sup>.
- [2] Typical.
- [3] Zero-based, least-squares, straight line method.
- [4] The high frequency tolerance is accurate within ±10% of the specified frequency.
- [5] 1/4-28 has no equivalent in S.I. units.

**Temperature Response Graph % / °F**

All specifications are at room temperature unless otherwise specified.



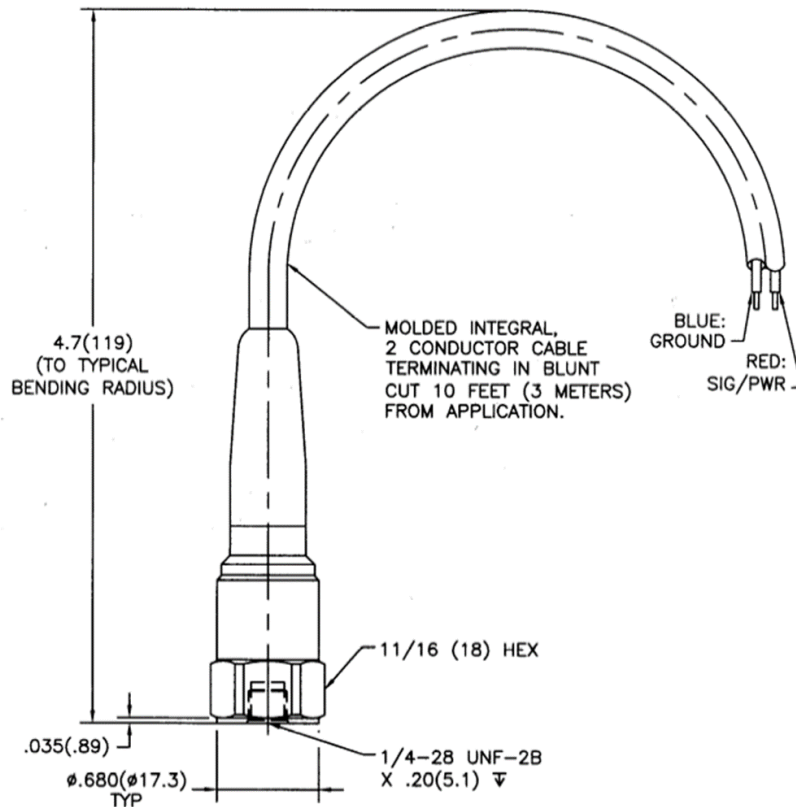
SEC of America  
807 E Main St. Durham, NC 27701.  
Ph: (919) 533-4920  
sales@sec-america.com  
www.sec-america.com



# CM-P Precision Accelerometer

Precision Accelerometer, Industrial, Ceramic Shear IEPE Top Exit With Integral Polyurethane Cable

## OUTLINE DRAWING MODEL CM-P30 ACCELEROMETER



Option: EX , Hazardous Area Approval

Temperature Response Graph % / °F

CI I, Div 2, Groups A, B, C, D; ExnL IIC T4, AExnA IIC T4

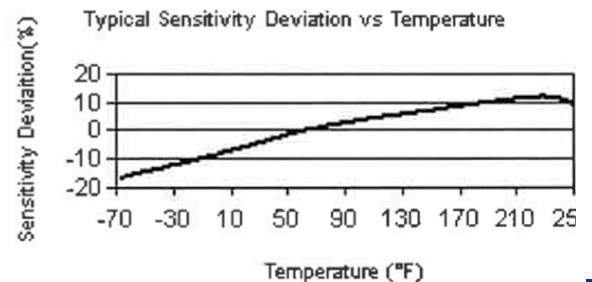
EEx ia IIC T4,  $-40^{\circ}\text{C} \leq T_a \leq 121^{\circ}\text{C}$ , II 1 G

CI I, Div I, Groups A, B, C, D; CI II, Div I, Groups E, F, G; CI III, Div I

Ex ia IIC T4, AExia IIC, T4

EEx nL IIC T4,  $-40^{\circ}\text{C} \leq T_a \leq 121^{\circ}\text{C}$ , II 3 G

All specifications are at room temperature unless otherwise specified.



Contact factory for specific approvals.

### Product Notes:

- [1] Conversion Factor  $1g = 9.81 \text{ m/s}^2$ .
- [2] Typical.
- [3] Zero-based, least-squares, straight line method.
- [4] The high frequency tolerance is accurate within  $\pm 10\%$  of the specified frequency.
- [5] 1/4-28 has no equivalent in S.I. units.



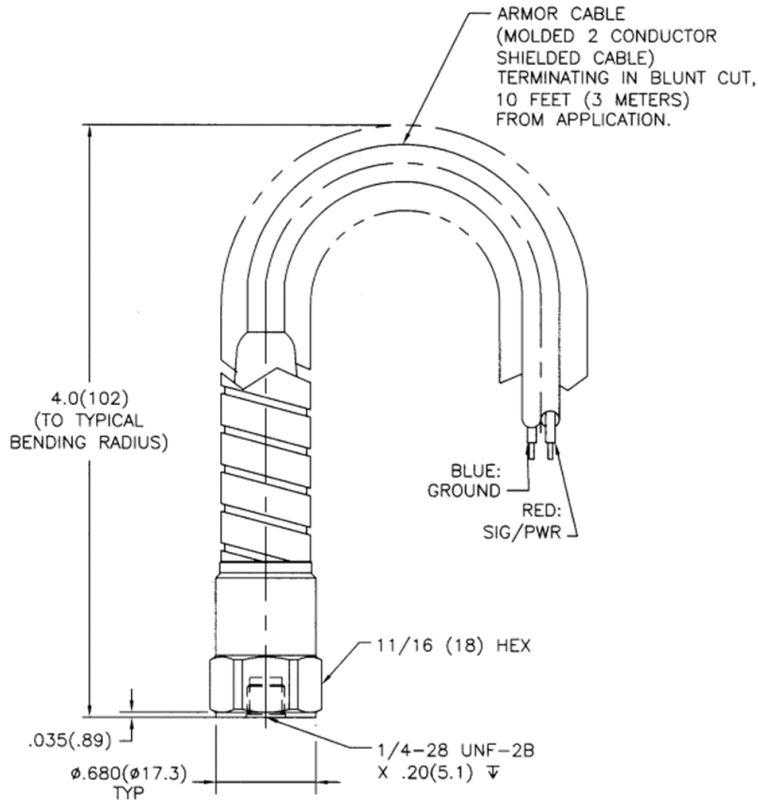
SEC of America  
807 E Main St. Durham, NC 27701.  
Ph: (919) 533-4920  
sales@sec-america.com  
www.sec-america.com



# CM-P Precision Accelerometer

Precision Accelerometer, Industrial, Ceramic Shear IEPE Top Exit With Integral Armored Cable

## OUTLINE DRAWING MODEL CM-P30 ACCELEROMETER

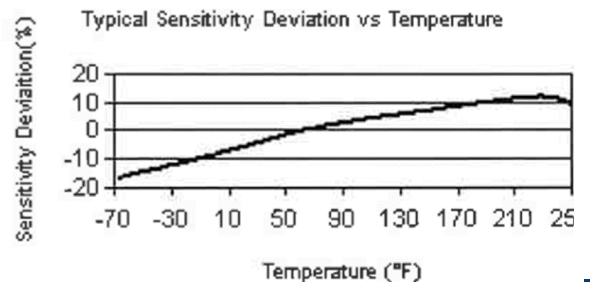


Option: EX , Hazardous Area Approval

Temperature Response Graph % / °F

CI I, Div 2, Groups A, B, C, D; ExnL IIC T4, AExnA IIC T4  
 EEx ia IIC T4, -40°C ≤ Ta ≤ 121°C, II 1 G  
 CI I, Div I, Groups A, B, C, D; CI II, Div I, Groups E, F, G; CI III, Div I  
 Ex ia IIC T4, AExia IIC, T4  
 EEx nL IIC T4, -40°C ≤ Ta ≤ 121°C, II 3 G

All specifications are at room temperature unless otherwise specified.



Contact factory for specific approvals.

### Product Notes:

- [1] Conversion Factor 1g = 9.81 m/s<sup>2</sup>.
- [2] Typical.
- [3] Zero-based, least-squares, straight line method.
- [4] The high frequency tolerance is accurate within ±10% of the specified frequency.
- [5] 1/4-28 has no equivalent in S.I. units.



SEC of America  
 807 E Main St. Durham, NC 27701.  
 Ph: (919) 533-4920  
 sales@sec-america.com  
 www.sec-america.com

